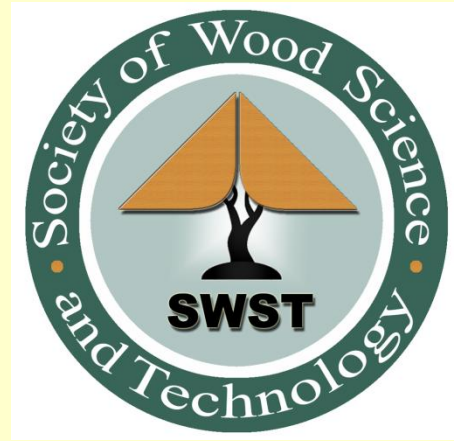


# SWST Newsletter

## ~ December 2009 ~



**In This Issue** (these are clickable links)

### *News*

[Open Letter on Recruiting](#)

[SWST Annual Convention 2010 in Geneva](#)

[Call for papers](#)

[SWST 2014 Int'l Convention – Call for Proposals](#)

[SWST Dues Due](#)

[Management Training Certificate](#)

[CleanTech gets energy grant](#)

[Note from Past President](#)

### *Positions*

[Forestry Dean - UBC](#)

[Asst Professor at UBC – Design and Construction](#)

[GRA at LSU](#)

[Professor in Munich](#)

**SWST**

[About SWST](#)

[Visiting Scientist List](#)



### *Note from the Editor*

Please note – The Society's address has changed!

SWST  
P.O. Box 6155  
Monona, WI 53716-6155  
PH: 608-577-1342  
Fax: 608-467-8979

Please remember to [renew your SWST membership](#) by January

Items for the February 2010 SWST Newsletter should be sent to me by the end of January -  
[AdamTaylor@utk.edu](mailto:AdamTaylor@utk.edu)

[<Back>](#)

## **PEER-TO-PEER RECRUITING**

### **AN OPEN LETTER ON EFFECTIVELY ENROLLING WOOD SCIENCE AND FOREST PRODUCTS STUDENTS**

A recent editorial in Wood and Fiber Science wrote of the struggles wood science programs are confronting. The trend of departmental fusion or ultimate extinction due to university budgetary constraints is gaining momentum, and wood science programs with low student numbers are squarely in administrators' bull's-eyes. Internal factors, such as staffing and limited progress in actively recruiting students into wood science, has compounded the issue with many programs on the cutting block or without an undergraduate degree option.

This is unfortunate as many authors, including Zink, Barnes, Bowyer, Gardner, Smith, Schmidt, Ifju, Thompson, Winistorfer, and Shupe, have published articles concerning wood science students' diverse backgrounds, thirst for knowledge, and professionalism in the workplace. These authors have stated the need for administration, faculty, and students to become a unified and proactive voice in recruiting students to keep programs alive.

We, as wood science graduate students, would like to revisit one such method, peer-to-peer recruiting, which Dr. Audrey Zink-Sharp stated over a decade ago is an effective approach to recruiting students. We feel this would be a valuable tool to boost awareness of our wood science programs. More importantly, using students is both an inexpensive and educational means of taking the fight for survival to the field.

Initially, we must overcome certain boundaries. First and foremost, we are not a dying breed. The novel technologies we are using and inventing to produce as well as sustain wood products are at the cutting-edge of the science field. Second, innovative research and publishing the results are keystones to survival of all wood science programs. We, as apprentice wood scientists, are becoming well aware of the value of technical works for both our professional careers and our departments' well-being. However, we must not lose sight of the other two keystones, learning and service. Extension and educational outreach give us a valuable opportunity to hit the pavement and aggressively recruit. Third, promotion has never been a strong suit of the wood products industry. Our profession, regrettably, is very good at doing much and saying little. Research, teaching, extension work, and the need to acquire funding are all factors that saturate the wood science faculty's time and effort.

Our universities have been actively involved in outreach campaigns. "Wood as a Sustainable Material" is a promotion North Carolina State University is currently utilizing not only to boost consumer awareness of wood products, but it is also being used in the classroom to enlighten current students enrolled in the wood products program. The fact that wood is 1) natural, 2) biodegradable, 3) renewable, 4) produced using solar energy, 5) vastly available, and 6) a "green" product are just some of the promotional facts we need to market to people. The "Wood Magic Science Fair" under its various names at Mississippi State, Virginia Tech, Oregon State, and the South Carolina Forestry Association, is an educational program aimed specifically at

elementary school students. It seeks to educate children about the tremendous importance of wood and wood products to each of us individually and to the economy of the nation. Moreover, students are empowered as active participators and leaders in conducting demonstrations. Other programs, such as Wood is Good at Purdue, are aimed at informing adults.

The time to promote and recruit for the survival and growth of our departments and programs is now. This is where allowing the students to become personally and professionally invested in the program becomes vital. Two years ago, Mississippi State College of Forest Resources' students conceived the idea of hosting a Southeastern Natural Resources Symposium. The symposium's objectives were to 1) promote and refine students' writing and presenting skills and 2) encourage networking among the participants to allow ideas to be exchanged and forge relationships. Over 150 undergraduate and graduate natural resources students from 13 universities attended the conference each year held at the Forest Products complex. Undoubtedly, many of the papers from the symposium were later submitted to nontechnical and technical journals for dissemination. The success of the symposium has led other universities to seek to host the event.

Our message is simple. Faculty: be proactive, get involved in discussing – it only has to be a five minute presentation – the need for current students to have pride about their wood science or forest products program. An excellent opportunity for assistant professors seeking tenure would be proposing courses that promote cross collaboration with other natural resources or even non – natural resources departments, including landscape architecture, entomology, chemistry, as well as agricultural and materials sciences. A special topics course at Mississippi State, Wood in Design and Engineering, brought students from Forest Products, Forestry, and Wildlife together to discover how their fields significantly depend upon one another to survive and thrive.

Students: be active participants in your local student chapters and discuss current events with fellow students, friends, family, and coworkers. This has been the underlying student enrollment feeder for many years for many programs. Opportunities to recruit are frequent and provide a great platform for department exposure. Freshman and transfer student orientations, student field days, and speaking engagements at high schools, community colleges, and other university departments offer current students a great exercise in public interaction. Communication and leadership skills are enhanced while accomplishing the fundamental task of recruiting students into wood science and forest products.

To reiterate, student recruiting can be accomplished by developing a departmental team, organizing and delegating tasks, scheduling recruiting engagements, and letting the students promote and recruit for the program. It is that simple. It should be the obligation of every department head and faculty to facilitate, encourage, and empower their student base to participate in this recruiting campaign. The students should take pride in their program and fight for its survival with the same professionalism and passion they devote to their studies.

We have outlined a method of recruiting we believe the most effective. Students who are willing to recruit will find a sense of belonging in the department and wish to transmit their sense of pride to other students. However, the system can work only if administration, faculty, and current students actively participate in the recruiting program. A simple yet effective approach is to empower the students, let them take pride in the curriculum and discuss, with appreciation, the

quality of their future degree and the high potential of job placement in a field that will provide many benefits to society.

Nathan E. Irby  
*Hofmann Fellow*  
*Department of Wood and Paper Science*  
*North Carolina State University*  
*Raleigh, NC*

T. Eric McConnell  
*Ph.D. Student*  
*Department of Forest Products*  
*Mississippi State University*  
*Mississippi State, MS*

[<Back>](#)



## Society of Wood Science and Technology (SWST) International Convention \* October 11–15, 2010



Co-hosted by United Nations Economic Commission for Europe - Timber Committee (UNECE-TC)



## \* Role of Wood Science in the Green Building Movement

- Session 1** Markets for use of solid and engineered wood products in green construction
- Session 2** Innovative wood and wood-based materials and their use in sustainable construction
- Session 3** Poster Session/Student Poster Competition/cash bar
- Session 4** Structural design for sustainable construction and disaster mitigation
- Session 5** The role of nanotechnology in green materials and sustainable construction
  - Banquet (fee required)
  - Tour of CERN, EPFL, Sauvabelin Tower (fee required)
- Session 6** Building codes and standards - Influence on material use and construction practices

- Session 1** Marchés pour l'usage du bois massif et des produits en bois d'ingénierie dans la construction verte
- Session 2** Bois innovateur et matériaux à base de bois et leur utilisation dans la construction soutenable
- Session 3** Session d'affiches/Compétition d'affiches d'étudiant(es)/Bar aux frais des participants
- Session 4** Conception structurale pour la construction durable et l'atténuation des sinistres
- Session 5** Le rôle de la nanotechnologie dans les matériaux verts et la construction durable
  - Banquet (aux frais des participants)
  - Visite du CERN, de l'EPFL et Tour de Sauvabelin (aux frais des participants)
- Session 6** Codes du bâtiment et normes - influence sur des pratiques en matière matérielles de construction d'utiliser-et

- Сессия 1** Рынки сбыта цельнодеревянных и специализированных деревянных изделий для применения в экологически чистом строительстве
- Сессия 2** Новаторская древесина и wood-based материалы и их польза в устойчивой конструкции
- Сессия 3** Стендовые доклады/студенческий конкурс стендовых докладов/платный бар
- Сессия 4** Проектирование экологически устойчивых сооружений и смягчение опасности стихийных бедствий
- Сессия 5** Роль нанотехнологий в создании экологически чистых материалов и сооружений
  - Банкет (за дополнительную плату)
  - Экскурсия в Европейский Центр ядерных исследований (CERN), Федеральную политехническую школу Лозанны (EPFL) и на башню Совабелен, Tour de Sauvabelin (за дополнительную плату)
- Сессия 6** Строительные кодексы и стандарты - влияние на материальных практиках пользы и конструкции

For more information, contact Victoria L. Herian, SWST, One Gifford Pinchot Drive, Madison, Wisconsin USA 53726  
Phone 608-231-9347 Fax 608-231-9592 Email vicki@swst.org  
Convention webpage: <http://www.swst.org/meetings/AM10>

[<Back>](#)



***THE ROLE OF WOOD SCIENCE IN THE  
GREEN BUILDING MOVEMENT  
TECHNICAL SESSIONS AT THE  
2010 SWST ANNUAL CONVENTION,  
PALAIS DES NATIONS, GENEVA,  
SWITZERLAND  
OCT. 11-15, 2010***

**ABSTRACT DUE DATE EXTENDED: JANUARY 31, 2010!**

**CALL FOR PAPERS IN**

**“THE ROLE OF WOOD SCIENCE IN THE GREEN BUILDING  
MOVEMENT”**

The *Society of Wood Science and Technology* will hold its Annual Convention in Geneva, Switzerland together with our co-hosts the *United Nations Economic Commission for Europe - Timber Committee (UNECE-TC)*. This five-day meeting will be held October 11-15, 2010, and includes technical sessions on **innovative wood and wood-based materials and their use in sustainable construction, the role of nanotechnology in green materials and sustainable construction, structural designs for sustainable construction and disaster mitigation, building codes and standards and their influence on material use and construction practices, and markets for use of solid wood and engineered wood products in green construction**. The final day will be a day-long tour of CERN and Ecole Polytechnique Federal de Lausanne and the Lausanne area. The UNECE Timber Committee meeting will be held October 11-15 with both concurrent and parallel sessions.

We invite submissions of ABSTRACTS for the six sessions (see attached form):

❖ **Session 1: Markets for use of solid and engineered wood products in green construction**  
Suggested topics include but are not limited to:

- Global and regional perspectives
- Influence of energy/climate change policy

❖ **Session 2: Innovative Wood and wood-based materials and their use in sustainable construction**. Suggested topics include but are not limited to: • What properties define a

green/sustainable material

- novel wood-based and composite building materials
- lignin-based adhesives
- use of solid and engineered wood products in sustainable construction
- durability and performance of novel wood-based materials

❖ **Session 3: Poster Session/Student Poster Competition/Cash Bar**

❖ **Session 4: Structural design for sustainable construction and disaster mitigation**

Suggested topics include but are not limited to: • new multi-story designs for wood frame construction

- designing for wind
- designing for earthquake protection
- deconstruction and reuse
- renovation of existing structures

❖ **Session 5: The role of nanotechnology in green materials and sustainable construction**

Suggested topics include but are not limited to: • cellulose nanofibers in green materials

- nanoindentation to characterize material properties
- how nanotechnology helps make a biodegradable material green

❖ **Session 6: Building codes and standards – Influence on material use and construction practices**

Approximately eight abstracts will be selected for presentation at each of the four 3-hour technical sessions. Abstracts not selected for Oral presentation will be accepted as Posters. All accepted Oral and Poster presentations will require a 4-8 page technical paper (Due August 1, 2010) to be published by SWST in a Proceedings (CD) given to all Annual Meeting attendees, and then electronically published via the internet on the SWST webpage at [www.swst.org](http://www.swst.org). Please note that all posters, oral presentations (PowerPoint presentations), and written papers must be written in English. There will be translation of oral presentations available at conference.

For further information on the session "*The Role of Wood Science in the Green Building Movement*" at the SWST 2010 Annual Convention in Geneva, SWITZERLAND, please contact: Susan Anagnost ([seanagno@esf.edu](mailto:seanagno@esf.edu)). For further information on the SWST 2010 Annual Convention in Geneva, SWITZERLAND, contact Vicki Herian ([vicki@swst.org](mailto:vicki@swst.org)) or see the webpages: <http://www.swst.org/meetings/AM10/>

## **Model for an Abstract**

### **Abstract for Presentations at the SWST International Convention**

**Palais des Nations, Geneva, Switzerland, October 11-15, 2010**

Susan E. Anagnost and Ed Pepke

An Abstract is required for all poster and oral presentations. Your Abstract will include the title,

authors' names (capitalized surname), and body of text, key words and authors contact details (if authors are from more than one organisation, contact details for these can be included also). Using a standard industry word processor (e.g. Microsoft Word 2007 - previous versions are accepted), type your document then store it as a \*.doc file. Email your Abstract as an attachment to Susan Anagnost ([seanagno@esf.edu](mailto:seanagno@esf.edu)) with the email title "SWST Session Abstract". This "*Model for an Abstract*" serves to indicate how you should organise your Abstract. The paper can be A4 or 8-1/2 by 11-in. Page layout should have 2.5 cm margins on all four sides, be single-spaced and use Times New Roman typeface with a 12-point pitch. The text should be left justified only, and have no tabs, tables, figures, pictures or references. Please do not divide words or right justify the text. The body of the Abstract should be between 1400 to 2100 characters, including the spaces between the words. The Abstracts should be less than 1 page, including affiliations and contact information (email, fax, and phone). Multiple addresses are used if there is more than one organisation - not just the senior author.

Your abstract must be received on or before January 31, 2010. If e-mail submission is not possible, please post/courier your Abstract on diskette or CD, together with a high quality printout to Susan Anagnost. On the diskette or CD label include your name, version of software used and the file name.

Use a laser printer or high quality inkjet printer and normal good quality paper for the printout. Your text will be reproduced from the electronic file, but the printout is critical to allow the editor to resolve any discrepancies. The Title should appear in bold, in lower case, with each noun starting with a capital. The major authors contact details shown follow the body of the abstract. Affiliations of all other authors should be given.

**Key words** Indicate up to 5 key words.

Susan E. Anagnost, Ph.D.  
SUNY College of Environmental Science and Forestry  
One Forestry Drive  
Syracuse, NY 13210 USA  
Tel +01-315-470-6837  
Fax +01-315-470-6879  
Email: [seanagno@esf.edu](mailto:seanagno@esf.edu)

[<Back>](#)

## **SWST 2014 INTERNATIONAL CONVENTION - CALL FOR PROPOSALS**

SWST is issuing a Call for Proposals for co-hosting our 2014 International Convention. We will be holding it outside of North America and any interested person, company, or university that would like to co-host in their city please submit a proposal and contact Vicki Herian at SWST, One Gifford Pinchot Drive, Madison, WI USA 53726, PH: +01-608-231-9347, Fax: +01-608-231-9592, Email:

[vicki@swst.org](mailto:vicki@swst.org).

[<Back>](#)



## **SWST 2010 MEMBERSHIP RENEWAL IS DUE JANUARY 1, 2010**

You can now renew your 2010 membership online! Simply go the home page for SWST

<http://www.swst.org>

Click on the "Member Login" site to login in or click on the "Renew Membership" link.

When you renew online, you select your membership type, click Renew, then click on the PayNow button. It will take you to a page where you can choose your credit card type and input your numbers, or you can use your PayPal account. You can also still send your check or credit card information to the address below or email me. **YOU DO NOT NEED A PAYPAL ACCOUNT TO USE THIS SERVICE.**

If you need a hard copy invoice, please let me know and I will email one.

The dues for 2010 are:

- Full Member \$75
- Student Member \$25
- Retired Member \$40
- Developing Country Full Member (electronic only) \$15
- Developing Country Student Member (electronic only) \$5

Please email if you have questions: [vicki@swst.org](mailto:vicki@swst.org)

[<Back>](#)

## **MANAGEMENT TRAINING CERTIFICATE PROGRAM**

Starting in **January 2010**.

The Centre for Advanced Wood Processing (CAWP) has created a new online management training program for the Wood Manufacturing Council. The program consists of 8 web-based modules on: Quality Management & Control; Sales & Marketing; Business Finance & Investment Evaluation; Production Planning; Human Resources & Safety; New Product Development; Factory Layout & Equipment Justification; and Supply Chain Management.

Each affordable course module can be taken on a part-time basis over six weeks, and has been designed specifically for the wood products industry. The training courses make extensive use of case studies and industry examples. Participants can take modules one by one at their own pace. For more details view the ManagementProgram web pages, contact [cawp@cawp.ubc.ca](mailto:cawp@cawp.ubc.ca) or visit their [web newsletter](#)

[<BACK>](#)

## **CLEANTECH PARTNERS AWARDED FUNDING**

I am very pleased to report that we have won a \$14.6 million grant (Recovery Funds) from the US Department of Energy (DOE) to deploy “shovel” ready energy efficiency technologies in Wisconsin across several energy-intensive clusters, including pulp and paper. Please see the following for more details.

It was very competitive. Over 350 applications were submitted to DOE requesting over \$4 billion in funding. Thanks. Masood

Project Director: Masood Akhtar, Ph.D., President, CleanTech Partners, Inc.

Project Title: Area 4: Creating Jobs Through Energy Efficiency Using Wisconsin’s Successful Focus on Energy Program

Project Objectives. The project objectives are:

Invest \$30.7 million installing energy efficient industrial equipment in Wisconsin (\$14.6 million from DOE, \$6.5 million from Wisconsin Focus on Energy, and \$9.6 million from private sources including utilities);

Create or preserve between 319 and 425 jobs in Wisconsin; and,

Create annual savings of \$9.8 million by saving 1.2 TBtu/yr (28,800 MWh, 11 million therms) and 84,700 tons of CO<sub>2</sub> across five different industrial sectors and eight different companies.

Project Description. The proposed project will deploy energy efficient industrial equipment across multiple industries in Wisconsin in support of the overarching objectives of the American Recovery and Reinvestment Act of 2009 (ARRA). The project will also meet state of Wisconsin strategic energy goals of creating and retaining high paying jobs and reducing fossil fuel use and greenhouse gas emissions.

Methods. Our team has been working diligently since the release of the FOA to develop this proposal. We have selected only the highest quality projects for inclusion in this application. We sent out a request to Wisconsin industry in early 2009, inviting interested companies to become part of our proposal. Companies who expressed interest in participating in the proposal were required to submit a full proposal to Focus on Energy and document specific energy conservation measures on their site(s) that save at least 25% energy over current baseline consumption. Another criterion for inclusion in our bundle is that the projects have to be shovel-ready and be able to begin implementation within 120 days of project start date. All of the projects included in our application meet these criteria and have been on the books of these companies for several months. However, implementation has been stalled due to lack of financing precipitated by the economic crisis. As a result of our outreach effort, we have identified nine shovel-ready projects in five different sectors, eight different companies and nine different cities.

Impacts (benefits and outcomes). There are three main impacts of this project. First, the project will create or save 319-425 high quality, high paying jobs in Wisconsin. Second, the project will reduce energy usage by 1.2 TBtu per year and avoid 84,700 tons of CO<sub>2</sub> emissions per year. Finally, DOE funds will be delivered through a strong, successful program that has in-depth

experience working with both DOE and the industrial sector in Wisconsin. The deployment model developed for this project is something that can be readily adopted by other states and partnerships.

Participants. The project team consists of CleanTech Partners (CTP), Focus on Energy (Focus) and nine subawardees. The team is organized to maximize the deployment of technologies across multiple companies in Wisconsin. CTP will provide overall project administration, including management of DOE funds (including distribution to the subawardees) and required reporting to DOE. CTP will also monitor and document equipment installation and commissioning. The request to DOE is for \$14.6 million in funds. The Focus program will provide \$6.5 million in cost sharing, as well as technical support to the subawardees. Private sources ( Alliant Shared Savings program and several of the subawardees) will provide an additional \$9.6 million in cost sharing. Subawardees will be responsible for implementing the specific projects at their sites, including final equipment design and engineering, vendor selection, procurement, permitting, construction, commissioning and performance monitoring.

[<Back>](#)

## **NOTES FROM PAST PRESIDENT: CRAIG SCHULER**

I really regret not being more involved with SWST and especially seeing special people -- like you. But I have done almost nothing of a professional nature since retiring, so I feel very much "out of the loop." Lorraine says I flunked retirement because I'm "working" 2 jobs. Actually I'm playing in 2 situations where they send me a check now and then. I do ticket sales and operations for the Colorado Rockies and for the National Western Stock Show. It's all part-time and leaves plenty of time to get the lawn mowed and other "essentials"

done. Also I do some singing and acting with 2 different groups. One is with a group of seniors that performs through our senior center here in Ft. Collins. The other is a parody group that writes our own lyrics and puts them together with well known melodies commenting on anything that happens to be in the news. Since Lorraine and I are the only Republicans in the group, it keeps us humble!

-Craig

*Editor's Note: Past presidents are encouraged to send an update for inclusion in future newsletters*

[<Back>](#)

## **DEAN, FACULTY OF FORESTRY, UBC**

The University of British Columbia (UBC) invites applications and nominations for the position of Dean of the Faculty of Forestry – one of the most respected faculties of its kind.

As one of the world's leading universities, The University of British Columbia's vision is to create an exceptional learning environment that fosters global citizenship, advances a civil and

sustainable society, and supports outstanding research to serve the people of British Columbia, Canada and the world. Situated in Vancouver, one of North America's most beautiful and dynamic cities, UBC offers faculty and some 50,000 students not just intellectual riches, but an unrivaled quality of life.

The Faculty of Forestry offers a broad range of degrees and programs in areas such as sustainable forest management, conservation, forest genetics, biomaterials and biotechnology, forests and society, Aboriginal forestry, international forestry, water hydrology and ecology, landscape ecology and design, forest ecosystems, biometrics and measurements, timber building technology, business management and marketing, wood science and technology. The Faculty is a world leader in education and research for the conservation and sustainable management of forests and for the creation of innovative forest products that support a vibrant forest industry.

The Dean of Forestry shares in the overall leadership of the University along with colleagues on the Committee of Deans and members of the senior administration. The Faculty of Forestry includes 60 faculty members, a support staff of almost 90, 500 undergraduate students and 260 graduate students. The Faculty attracts more than \$13 million in annual research funding and is housed in the spectacular Forest Sciences Centre on the UBC campus. The Faculty also operates three Research Forests that cover a range of eight diverse biogeoclimatic subzones and three tenure systems. Many faculty members are internationally recognized leaders in their fields.

The successful candidate will have a distinguished research record, proven leadership abilities, a demonstrated focus on excellence, and the capacity and vision to build on the momentum UBC has achieved in recent years. A strategic and innovative leadership style and excellent communication and interpersonal skills are essential. The successful candidate will be appointed at the rank of Professor in an academic unit within the Faculty, and will report to the Provost and Vice-President Academic.

To explore this opportunity or submit nominations, please contact Barbara Morrison, Brent Cameron or Kyle Mitchell in our Vancouver office at 604-685-0261. Please submit your resume and related information online at [www.rayberndtson.ca](http://www.rayberndtson.ca)

For more information about UBC, visit [www.ubc.ca](http://www.ubc.ca). To learn more about the Faculty of Forestry, visit [www.forestry.ubc.ca](http://www.forestry.ubc.ca)

*UBC hires on the basis of merit and is committed to employment equity. The University encourages all qualified persons to apply; however, Canadians and permanent residents of Canada will be given priority.*

[<Back>](#)

## **ASSOCIATE CHAIR IN WOOD BUILDING DESIGN AND CONSTRUCTION TENURE TRACK ASSISTANT PROFESSOR POSITION**

The Faculty of Forestry (Department of Wood Science) and the Faculty of Applied Science (Department of Civil Engineering and School of Architecture and Landscape Architecture) at the University of British Columbia are seeking candidates for an endowed Associate Chair in **Wood**

**Building Design and Construction** at the rank of Assistant Professor. Candidates must have demonstrated the clear potential to develop excellence in research, teaching and technology transfer in the design and construction of wood based structures.

The Associate Chair holder will be a major contributor to a multidisciplinary team addressing all aspects of the design and construction of wood-based buildings. The Associate Chair holder will be expected to specialize in timber structures and contribute expertise to assist a team developing the holistic designs of timber structures by considering the interactions among the structural, architectural, building physics, energy efficiency, environmental and green building requirements.

The successful candidate will be expected to hold a Bachelors degree in civil engineering and a Ph.D. in a related field. Candidates with a post-graduate degree, relevant international experience, and proven excellence or outstanding research potential in Structural Engineering or Building Science as well as a commitment to quality teaching are encouraged to apply. Applicants should either have, or be eligible to register with, the Association of Professional Engineers and Geoscientists of British Columbia. Registration is required within four years of appointment. The successful candidate will be expected to engage in undergraduate and graduate education, develop a personal research program and collaborate with members of the School of Architecture and Landscape Architecture, Department of Civil Engineering and Department of Wood Science. The successful candidate will also be required to interact with the wood products industry and the design community to integrate and further develop expertise in this area. This is a rare opportunity to contribute to a globally significant program at a leading North American university.

This tenure-track position will be a joint appointment between the Faculties of Forestry and Applied Science. The appointment will be effective 1 July 2010, but an alternative date may be arranged. Salary and Academic Rank will be commensurate with experience and qualifications. Interested candidates should address their enquiries to:

Dr Paul McFarlane, Professor and Head  
Department of Wood Science  
University of British Columbia  
2424 Main Mall  
Vancouver, B. C., Canada V6T1Z4  
Email: [paul.mcfarlane@ubc.ca](mailto:paul.mcfarlane@ubc.ca)

The **closing date for applications is 31December 2009**. Applications should include curriculum vitae, a short statement of research interests, evidence of teaching effectiveness, a portfolio showing relevant experience in wood building design and construction and the names of 3 references.

The University of BC hires on the basis of merit and is committed to employment equity. All qualified persons are encouraged to apply. In accordance with Canadian immigration requirements, priority will be given to Canadian citizens and permanent residents of Canada.

[<Back>](#)

## MASTERS STUDENT RESEARCH ASSISTANTSHIP AT LSU

Starting January 19<sup>th</sup> 2010

### Project Name:

Alternative Bio-based Paths to Prosperity for Small and Medium Agricultural Producers and Forest Landowners in the U.S. Gulf South: A Pilot Study in Louisiana and Mississippi

Dr. Richard Vlosky, Director and Professor, Forest Products Marketing Program/Louisiana Forest Products Development Center in the School of Renewable Natural Resources at Louisiana State University is soliciting candidates to pursue a M.S. degree with an emphasis in business and marketing in the area of wood and agricultural bio-based energy and fuels to start **Spring Semester 2010**.

In addition to a 2-year graduate research assistantship (\$19,000/year), a 100% tuition waiver and thesis research funding will be provided to the successful candidate. In addition, up to \$1,000 in page charges for refereed journal publications (with the candidate as first author) and all project-related travel expenses will be covered including giving a presentation at a national conference.

The successful applicant must be highly motivated, able to work with minimal supervision, have a 100% command of English speaking and writing abilities, and enjoy working in a results-oriented environment.

### Application Procedure:

The deadline to apply online to the LSU Graduate School for U.S. citizens and *international applicants in the U.S. on F-1 or J-1 student visas* is January 1, 2010. Applicants must have taken the GRE (above 1100 preferred) and have the score available for the LSU application forms. In addition to the GRE, international students must have TOEFL or IELTS scores available UNLESS the applicant has a university degree from a U.S. institution or from a country where English is the primary language. All application procedures and application payment is made online at <http://appl003.lsu.edu/grad/gradschool.nsf/index>. International students can find additional information at: <http://www.oip.lsu.edu/iso/>

You MUST be accepted by the LSU Graduate School before you can be considered by me for this assistantship.

**IN ADDITION** to your application to the LSU Graduate School, interested parties should email a Letter of Interest, a Resume, a copy of your unofficial transcripts, and a list of 3 references to: Dr. Richard Vlosky, Director and Professor of Forest Products Marketing, Louisiana Forest Products Development Center, email: [rvlosky@agcenter.lsu.edu](mailto:rvlosky@agcenter.lsu.edu); phone: (225) 578-4527; fax: (225) 578-4251, 227 School of Renewable Natural Resources, Louisiana State University, Baton Rouge, LA 70803. *This should be done as soon as possible so I can review your credentials.*

[<Back>](#)

## **FULL PROFESSOR IN WOOD SCIENCE TECHNISCHE UNIVERSITÄT MÜNCHEN**

The Department of Life Science Engineering at the Faculty Center of Life and Food Sciences Weihenstephan is inviting applications for the position of a Full Professor in Wood Science starting on 1 October 2010.

We are looking for applicants with a proven and excellent record in the field of fundamental and applied wood science.

Main focus of this professorship is put on chemical and biological properties of wood, chemical and mechanical utilisation, innovative utilisation strategies of forest resources including non-timber-forest-products along the value-added-chain of forest-wood-pulp-paper.

Climate protection and environmental sustainability in terms of sustainable development must be taken into account.

The chair is involved in the bachelor degree course "Forest Science and Resource Management", the master degree courses "Forest and Wood Science" as well as "Renewable Raw Materials" and the English master degree course "Sustainable Resource Management.

Preconditions for employment are a degree from a university or an accredited college of applied science, pedagogical aptitude, Ph.D./doctorate and a postdoctoral lecturing qualification or certification of an equivalent academic achievement, which may have been obtained as a junior professor or outside a university environment. At the time of appointment applicants should not be older than 52 years. Under certain circumstances the age limit may be lifted.

In cases of substantially equal eligibility, preferential consideration will be given to disabled candidates.

As part of the excellence initiative of the German federal and state governments, the Technische Universität München pursues the strategic goal of substantially increasing the proportion of women in research and education and thus expressly invites qualified female scientists to apply for this position.

Applications with the usual supporting information (CV, certificates, credentials, etc., list of publications including reprints of the most important papers) should be submitted by **January 11, 2010** to: Prof. Dr. Gerhard Wenzel, Dekan der Fakultät Wissenschaftszentrum Weihenstephan für Ernährung, Landnutzung und Umwelt der TU München, Alte Akademie 8, 85354 Freising-Weihenstephan.

[<Back>](#)

### **ABOUT SWST**

The SWST Newsletter is published six times a year by the Society of Wood Science and Technology, One SWST, P.O. Box 6155 Monona, WI 53716-6155 PH: 608-577-1342 Fax: 608-467-8979.

Items for the Newsletter may be sent to Adam Taylor, at: [AdamTaylor@utk.edu](mailto:AdamTaylor@utk.edu)

The Society of Wood Science and Technology is a technical and professional organization for scientists and engineers working in academia, government, consulting and the forest-products industries and is dedicated to providing education and expertise regarding better ways to use and produce wood products.

E-mail: [vherian@fs.fed.us](mailto:vherian@fs.fed.us)

Web site: <http://www.swst.org>

*Society of Wood Science and Technology*

President:	James Funck
Past President:	Jerrold Winandy
President Elect:	Susan Anagnost
Vice President:	Todd Shupe
Executive Director:	Vicki L. Herian
Directors:	Vikram Yadama (2008) Robert Bush (2008) Steve Quarles (2009) Sheldon Shi (2009)

Wood and Fiber Science Editor:	Frank Beall
Newsletter Editor:	Adam Taylor

[<Back>](#)

## POTENTIAL SWST VISITING SCIENTISTS

**ACDA, MENANDRO N.**, University of the Philippines Los Banos, Dept. of Forest Products and Paper Science, College, Laguna, Philippines 4031 (+63 49 536 3432) (FAX +63 49 536 3206)  
email: [mnacda@yahoo.com](mailto:mnacda@yahoo.com)

**Specialty:** Termite biology and control.

**Will Discuss Formally and Informally:** Above specialty.

**ANDERSON, MATTHEW**, Wood Advisory Services, Inc. 3700 RT. 44, Suite 102, Millbrook, NY 12545 (845-677-3091) (FAX 845-677-6547) email: [matt@woodadvisory.com](mailto:matt@woodadvisory.com)

**Specialty:** Wood science consulting and applied research.

**Will Discuss Formally and Informally:** Assessment of wood frame buildings (destructive and nondestructive); Evaluations of marine and foundation pilings; Investigation of construction related deficiencies; Microbiological evaluations (wood fungi, mold, bacteria).

**ARMSTRONG, JAMES P.**, Associate Professor, West Virginia University, P.O. Box 6125, Morgantown, WV 26506-6125 (304-293-2941, ext. 2486) (FAX 304-293-2441)  
email: [jarmstro@wvu.edu](mailto:jarmstro@wvu.edu)



**Specialty:** Wood anatomy and physical properties; Contemporary issues in forest resources and the wood products industry.

**Will Discuss Formally:** Various topics related to forest resources in U.S. history (see: [http://www.wdsc.caf.wvu.edu/otherwebs/wdsc\\_100.htm](http://www.wdsc.caf.wvu.edu/otherwebs/wdsc_100.htm).); Eco-terrorism--Its causes and impacts.

**Will Discuss Informally:** Any of the above; Education in WS&F; The enrollment problem in WS&T.

**BARNES, H. MICHAEL**, Thompson Professor of Wood Science and Technology, Forest Products Laboratory, Mississippi State University, Box 9820, Mississippi State, MS 39762-9820 (662-325-3056) (FAX 662-325-8126) email: mbarnes@cfr.msstate.edu

**Specialty:** Wood deterioration and preservation.

**Will Discuss Formally and Informally:** Wood Treatments, Treatment Mechanics, Wood Deterioration & Preservation and Composite Durability.

**BEALL, FRANK C.**, University of California Berkeley, College of Natural Resources, 1301 South 46th Street, Richmond, CA 94804 (510-665-3536) (FAX 510-665-3427) email: frank.beall@nature.berkeley.edu

**Specialty:** Nondestructive evaluation of wood and wood-based materials.

**Will Discuss Formally:** Ultrasonics for NDE; Future of NDE; Use of project value assessment to evaluate the value of a research project; Program at UCFPL.

**Will Discuss Informally:** All of the above plus most topics in wood physics; Research management; Organization of research papers; The patent process.

**BOWYER, JIM L.**, Director, Responsible Materials Program, Dovetail Partners, Inc., 528 Hennepin Avenue, Suite 202, Minneapolis, MN 55403 and Professor Emeritus, Department of Bioproducts and Biosystems Engineering, University of Minnesota, St. Paul, MN (651-490-7688) (FAX 612-333-0432) email: jimbowyer@comcast.net

**Specialty:** Responsible consumption, environmental implications of biomaterials and bioenergy production and use.

**Will Discuss Formally:** Environmental aspects of forestry, timber harvest and wood use; Environmental life cycle assessment; green building programs; U.S. environmental policy; Responsible consumption; The role of wood in the growing bio-energy industry; environmental education of children; The tropical deforestation problem.

**Will Discuss Informally:** Almost anything.

**BUSH, ROBERT**, Professor, Dept. of Wood Science and Forest Products, Virginia Tech, Blacksburg, VA 20461-0503 (540-231-8834) (FAX 540-231-8868) email: rbush@vt.edu

**Specialty:** Forest products marketing and management

**Will Discuss Formally:** The marketing of forest products in the U.S.; Strategic decision-making in

wood-based industries; New forest products marketing research in the U.S. and the United Kingdom.

**Will Discuss Informally:** The above topics in addition to research to help improve student recruitment in Wood Science.

**BRYANT, BEN S.**, 4102-51st Ave., NE, Seattle, WA 98105 (206-522-6273) (FAX 206-522-6273)  
email: fibrobb@hotmail.com

**Specialty:** How we can use the 5 elements of wood science (the mechanical, physical, chemical and biological properties of wood and wood structure and anatomy) to solve problems in wood technology and critically analyze new products as well as new building systems.

**Will Discuss Formally:** in two or more illustrated seminars—for grad students and faculty preferably—with handouts and outlines. These will emphasize the importance of understanding wood anatomy and structure (including the submicroscopic nature of the cell wall).

**Will Discuss Informally:** Will ask students to try to critically analyze, in light of the above, at least 6 “new products” of my own invention and explain why more of them failed than succeeded to reach commercialization. (I’ll show samples of these and/or photographs and diagrams re how I used an understanding of wood science to develop these products. We will also discuss the reasons for failure and/or success of inventions coming from federal laboratories, academic laboratories and industry research departments (including machinery and resin suppliers), and summarize what general lessons can be learned from these case histories.

**CHEN, ZHANGJING, DR.**, 506 Alleghany Street, Blacksburg, VA 24060 (540-231-4962)  
(FAX 540-231-8868) email: chengo@vt.edu

**Specialty:** Wood drying.

**Will Discuss Formally and Informally:** Above specialty.

**CHOW, POO**, 2406 Burlison Drive, Urbana, IL 61801 (217-333-6670) (FAX 217-244-3219)  
email: pchow@uiuc.edu

**Specialty:** Physical, mechanical and chemical properties of wood-based materials.

**Will Discuss Formally:** Hardwood composites; Durability of wood for structural uses.

**Will Discuss Informally:** Durability of wood-base materials; Utilization of non-wood plant fiber.

**COOPER, PAUL**, Associate Professor, Forestry Department, University of Toronto,  
33 Willcocks Street, Toronto, Ontario, CANADA M5S 3B3 email: p.cooper@utoronto.ca

**Specialty:** Wood deterioration and protection.

**Will Discuss Formally:** Interaction with chemicals with the wood cell wall; CCA fixation;  
Environmental impacts of treated wood over the full life cycle; Recycling/reuse of treated wood.

**Will Discuss Informally:** Collaborative research; Graduate student recruitment;  
Teaching methods.

**CUTTER, BRUCE**, Associate Professor, University of Missouri, 124 A-BNR, Columbia, MO 65211  
(573-882-5191) (FAX 573-884-2636) email: cutterb@missouri.edu

**Specialty:** Tree growth, wood quality.

**Will Discuss Formally:** Eastern red cedar as a biogeochemical monitor; General tree growth; Wood quality; Agroforestry.

**Will Discuss Informally:** Eastern red cedar as a biogeochemical monitor; General tree growth; Wood quality; Behavior of wood in fire situations.

**DeBONIS, A. L.**, President, Wood Advisory Services, Inc., P.O. Box 1322, Millbrook, NY 12545 (914-677-3091) (FAX 914-677-6547) email: ald@woodadvisory.com

**Specialty:** Wood engineering.

**Will Discuss Formally and Informally:** Design properties of lumber; Grading of structural lumber (visual and/or MSR); Reliability-based design; The role of consultants in the forest products field; Heavy timbers in residential and commercial construction; Hardwood structural lumber.

**DOLAN, J. DANIEL, Dr.**, Professor, Washington State University, P.O. Box 642910, Pullman, WA 99164-2910 (509-335-7849) (FAX 509-335-7632) email: jddolan@wsu.edu

**Specialty:** Timber engineering; Structural performance; Wood mechanics; Connections.

**Will Discuss Formally and Informally:** All specialties.

**FLYNN, KEVIN**, Flynn & Associates, Wood Science & Technology, P.O. Box 805, El Cerrito, CA 94530 (510-758-4686) (FAX 510-758-4893) email: k\_flynn@sbcglobal.net

**Specialty:** Wood performance; Problem analysis.

**Will Discuss Formally:** Durability; Degradation; Protection.

**Will Discuss Informally:** Any related issues.

**FUNCK, JAMES W.**, Manager, Lumber & Wood Science, Weyerhaeuser Company, WTC 2B2, P.O. Box 9777, Federal Way, WA 98063-9777 (253-924-6826) (FAX 253-924-4239) email: jim.funck@weyerhaeuser.com

**Specialty:** Optical and dielectric scanning for surface defects and roughness; Process modeling and simulation (lumber and plywood); Process control.

**Will Discuss Formally:** Above listed specialties.

**Will Discuss Informally:** Above listed specialties; Education - graduate and undergraduate.

**GARDNER, DOUGLAS J.**, University of Maine, 208 AEWB Building, Orono, ME 04469 (207-581-2846) (FAX 207-581-2074) email: douglas.gardner@umit.maine.edu

**Specialty:** Wood adhesion; Wood composites.

**Will Discuss Formally:** Wood adhesion; Wood surface chemistry; Wood/plastic composites.

**Will Discuss Informally:** Anything.

**GLASSER, WOLFGANG G.**, Professor of Wood Chemistry, Virginia Polytechnic Institute and State University, Department of Wood Science & Forest Products, 210 Cheatham Hall, Blacksburg, VA 24061 (540-231-4403) (FAX 540-231-7664) email: wglasser@vt.edu

**Specialty:** Polymer and materials science aspects of forest products; Biobased materials from wood; Steam explosion.

**Will Discuss Formally:** Structure--property relationships of cellulose, xylan and lignin and their derivatives; Cellulosic thermoplastic polymers and composites; Lignin chemistry.

**Will Discuss Informally:** The Carbohydrate Economy: Technical, economic social .

**GOODELL, BARRY, Ph.D.**, University of Maine, Wood Science and Technology Dept., 5755 Nutting

Hall, Orono, ME 04469-5755 (207-581-2888) email: goodell@umit.maine.edu

**Specialty:** Biodeterioration; Bioprocessing and bioconversion of wood.; Nanotechnology: Producing carbon nanotubes from wood; Biocomposites and polymer matrix composites: ComPRIS.

**Will Discuss Formally:** Any of the above topics as well as an overview of Wood Utilization Research (WUR) Center activities at the University of Maine or nationally.

**Will Discuss Informally:** Any of the above. See <http://woodscience.umaine.edu/goodell/> for more information on my research, or <http://www.woodutilization.org> for information on WUR.

**GUPTA, RAKESH.**, Oregon State University, Department of Wood Science & Engineering, 114 RH, Corvallis, OR 97331 (541-737-4223) (FAX 541-737-3305)  
email: rakesh.gupta@oregonstate.edu

**Specialty:** Wood engineering/Mechanics; Mechanical properties/behavior of wood.

**Will Discuss Formally:** Above listed specialities.

**Will Discuss Informally:** Above listed specialities.

**IFJU, GEZA**, Department of Wood Science & Forest Products, Virginia Polytechnic and State University, 210 Cheatham Hall, Blacksburg, VA 24060-0323 (540-231-8215)  
(FAX 540-231-8868) email: ifju@vt.edu

**Specialty:** Quantitative wood anatomy; Structure-property relationships.

**Will Discuss Formally and Informally:** Above specialty.

**JAGELS, RICHARD**, Professor, Department of Forest Ecosystem Science, University of Maine, 5755 Nutting Hall, Orono, ME 04469 (207-581-2884) (FAX 207-581-2889)  
email: Richard.Jagels@maine.edu

**Specialty:** Wood structure; Wood quality.

**Will Discuss Formally:** Morphometric analysis applied to wood structure and wood quality studies; Wood analysis of wetsite archaeological finds.

**Will Discuss Informally:** Environmental influences on wood production and wood quality; Conservation of waterlogged wood; Technology transfer; Health hazards of wood.

**JELLISON, JODY**, Professor of Biology, University of Maine, 313 Hitchner Hall, Orono, ME 04469 (207-581-2995) (FAX 207-581-2969) email: jellison@umit.maine.edu

**Specialty:** Biodegradation of wood; Fungal metabolism.

**Will Discuss Formally:** Biological degradation of wood.

**Will Discuss Informally:** Interdisciplinary studies.

**KAMKE, FREDERICK A.**, Endowed Chair-JELD-WEN, Oregon State University, Dept. Wood Science & Engineering, 104 Richardson Hall, Corvallis, OR 97331 (541-737-8422)

(FAX 541-737-3385) email: fred.kamke@oregonstate.edu

**Specialty:** Wood physics and composites.

**Will Discuss Formally:** Rotary dryers; Heat and mass transfer during flakeboard manufacture; Viscoelastic behavior of wood.

**Will Discuss Informally:** Heat and mass transfer in wood and wood products

**KIM, MOON J.**, Department of Forest Products, Mississippi State University, Mississippi State, MS 39762-9820 (662-325-3109) (FAX 662-325-8126)

email: mkim@cfr.msstate.edu

**Specialty:** Wood Adhesives; UF resins; PF resins, PRF resins.

**Will Discuss Formally and Informally:** Above specialty.

**KLINE, D. EARL**, Assistant Professor, Virginia Polytechnic Institute and State University, Department of Wood Science and Forest Products, 210 Cheatham Hall, Blacksburg, VA 24061-0323 (540-231-8841) (FAX 540-231-8868) email: kline@vt.edu

**Specialty:** Industrial systems engineering of wood products processing and manufacturing; Operations research; Process control and automation.

**Will Discuss Formally:** Computer simulation and optimization methods; Machine vision applications in wood products processing; Artificial Intelligence applications in wood science.

**Will Discuss Informally:** Any of the above; Computer spreadsheet development for quality control and process control; Computer programming.

**LACHENBRUCH, BARBARA**, Associate Professor, Oregon State University, Dept. of Forest Products, 118 Richardson Hall, Corvallis, OR 97331 (541-737-4213) (FAX 541-737-3385)

email: barb.lachenbruch@oregonstate.edu

**Specialty:** Wood quality/silviculture interactions; Tree physiology.

**Will Discuss Formally:** Effects of tree biology on wood quality; Tree water relations and biomechanics as related to xylem structure.

**Will Discuss Informally:** Dual-career, women and family issues in grad school and academics.

**LAMB, FRED M.**, Fred Lamb Consulting, Inc., 325 Tomahawk Drive, Christiansburg, VA 24073 (540-231-7256) (FAX 540-231-8868) email: fml195@vt.edu

**Specialty:** Wood processing; Furniture manufacturing processes.

**Will Discuss Formally:** Furniture manufacturing technology; Industrial noise; Wood machining (Theory and Industrial Practices); Technology transfer (Theoretical Models and Current Practices).

**Will Discuss Informally:** Same as above; Lumber drying and wood deterioration.

**LITTLE, ROBERT L.**, Armstrong Wood Products, 498 Salt Street, Winston-Salem, NC 27101 (336-406-1746) (FAX 336-703-1808) email: r\_little@bellsouth.net

**Specialty:** Drying of hardwood lumber.

**Will Discuss Formally:** Automated control of hardwood dry kilns, Control of corrosion in dry kiln buildings, General drying practices for hardwood lumber, and Kiln design considerations.

**Will Discuss Informally:** General wood technology.

**LOFERSKI, JOSEPH R.**, Associate Professor, Virginia Polytechnic Institute and State University, Department of Wood Science and Forest Products, Brooks Forest Products Center, Blacksburg, VA 24061-0503 (540-231-4405) (FAX 540-231-8868) email: jloferski@vt.edu

**Specialty:** Wood engineering, Design of wood structures, Long-term performance of buildings, Historic buildings

**Will Discuss Formally or Informally:** Preservation of historic wood structures; Long-term performance of wood structures; Building systems; Deterioration of wood building materials.

**MALONEY, THOMAS M.**, Retired, Washington State University, Pullman, WA 99164-1806 (509-335-4916) (FAX 509-335-5077) email: tmaloney@pullman.com

**Specialty:** Composition and composite wood products.

**Will Discuss Formally and Informally:** Any aspect of particleboard, flakeboard, fiberboard, and composites; The board industry in other parts of the world.

**MARRA, ALAN**, Professor (retired, University of Massachusetts), 444 Old Montague Road, Amherst, MA 01002 (413-549-6910).

**Specialty:** Wood gluing; Reconstituted products.

**Will Discuss Formally:** Wood technology in the forest enterprise; Technology in the glue line.

**Will Discuss Informally:** R&D in WS&T; Fiddling with education.

**McLAIN, THOMAS E.**, Professor of Timber Engineering and Department Head, Oregon State University, 119 Richardson Hall, Corvallis, OR 97331-5751 (541-737-4257) (FAX 541-737-3385) email: Thomas.McLain.oregonstate.edu

**Specialty:** Engineering properties of wood and wood-based materials; Design of wood structures; Structural mechanical connections; Role of wood in modern society; Forest products/wood science academic, extension and research program administration.

**Will Discuss Formally:** Why Wood Engineering? The role of wood in modern society; Integrating extension in research and teaching; Pacific Northwest forest conflicts.

**Will Discuss Informally:** Above topics and most anything else.

**MORRELL, JEFFREY J.**, Professor, Department of Forest Products, 230 Richardson Hall, Oregon State University, Corvallis, OR 97331-5751 (541-737-4222) (FAX 541-737-3385)

email: Jeff.Morrell@oregonstate.edu

**Specialty:** Wood microbiology; Biodeterioration; Preservation.

**Will Discuss Formally:** Remedial control of decay in wood structures; Proper use of wood in adverse environments; OSU's cooperative pole research program.

**Will Discuss Informally:** Biodeterioration and biological interactions; Treatability of refractory wood species.

**O'HALLORAN, MICHAEL R.**, President, Western Wood Products Association, 522 SW 5th Street, Suite 500, Portland, OR 97204-2122 (503-224-3930) (FAX 503-224-3934)

email: mohalloran@wwpa.org

**Specialty:** Wood engineering, mechanics, wood structures, codes, standards, research management.

**Will Discuss Formally:** Structural panel industry (Plywood, OSB, waferboard) status, markets, uses, standards, engineering design, LRFD design; Glued laminated timber; Structural composite lumber.

**Will Discuss Informally:** Trade associations; Structural panel topics; International markets; above topics.

**PARIDAH, MD. TAHIR.**, Associate Professor Dr., Universiti Putra Malaysia, Institute of Tropical Forestry and Forest Products, Serdang, Selangor, MALAYSIA 43400 (608-89472186) (FAX 608-89472180) email: parida\_introb@yahoo.com

**Specialty:** Bonding of tropical wood and non-wood materials; Kenaf as raw material for composite products.

**Will Discuss Formally:** On MOU between UPM and host University: 1) establish student exchange program; 2) R&D collaboration..

**Will Discuss Informally:** Post graduate studies at UPM.

**SHALER, STEPHEN**, Professor, University of Maine, 5755 Nutting Hall, Orono, ME 04469-5755 (207-581-2886) (FAX 207-581-2875) email: Steve.Shaler@umit.maine.edu

**Specialty:** Wood mechanics and composites.

**Will Discuss Formally:** Wood fiber properties; Computer and imaging applications; Experimental mechanics.

**Will Discuss Informally:** Hybrid wood composites.

**SHI, SHELDON QIANG**, Mississippi State University, Forest Products Department, Box 9820, Mississippi State, MS 39762-9820 (662-325-3110) (FAX 662-325-8126)

email: sshi@cfr.msstate.edu

**Specialty:** Wood (Wood-plastics) composites, wood adhesion, moisture related properties of wood and wood composites.

**Will Discuss Formally:** Recycling of polymer fluff in wood composites; Contact angle determination of particles.

**Will Discuss Informally:** Moisture related properties of wood composites; Student recruitment issue.

**SMITH, BOB**, Associate Professor/Extension Specialist, Virginia Tech, 1650 Ramble Road, Mailcode 0503, Blacksburg, VA 24061 (540-231-9759) (FAX 540-231-8868)  
email: rsmith4@vt.edu

**Specialty:** Forest products marketing; Professional sales in the forest products industry; Markets for wood in the U.S. infrastructure; Markets and perceptions of timber by engineers.

**Will Discuss Formally:** Marketing forest production; Perceptions of wood in the U.S. infrastructure; Educational needs in the forest products industry.

**Will Discuss Informally:** Timber bridges; Wood science and forest products at VPI; The Center for Forest Products Marketing and Management.

**SMITH, W. RAMSAY**, Arch Wood Protection, Inc., 3941 Bonsal Road, Conley, GA 30288 (404-362-3970) (FAX 404-363-8585) email: wrsmith@archchemicals.com

**Specialty:** International trade in forest products; Hardwood exports; Wood quality influences on product acceptance in foreign markets.

**Will Discuss Informally:** Graduate programs in wood science and in international trade; Views of the future of the forest products industry; other topics as desired.

**SMULSKI, STEPHEN, Ph.D.**, President, Wood Science Specialists, Inc., 453 Wendell Rd., Shutesbury, MA 01072 (413-259-1661) (FAX 413-259-1610) email: woodsci@crocker.com

**Specialty:** In-service performance of wood and wood-base products in residential, commercial and industrial construction; Preventing degradation of wood in service.

**Will Discuss Formally:** Moisture problems and durability of wood-frame houses; Forensic application of wood science and technology

**Will Discuss Informally:** Consulting opportunities in wood science and technology; Career opportunities in wood science and technology.

**STOKKE, DOUGLAS D.**, Assistant Professor, Iowa State University, Dept. of Nat. Res. Eco. & Mgt., 339 Science II, Ames, IA 50011-3221 (515-294-2115) (FAX 515-294-2995)  
email: dstokke@iastate.edu

**Specialty:** Wood structure and properties, wood quality, light and electron microscopy.

**Will Discuss Formally:** Wood micro- and ultrastructure; Applications of microscopy to wood products research; Birdseye maple; Color analyses of wood products; SWST international visitation trip to China.

**Will Discuss Informally:** Microstructure of wood and polymer composites; Education in wood science and technology.

**SUN, DR. RUN-CANG**, Beijing Forestry University, College of Material Science and Technology, Beijing, CHINA 100083 email: rcsun3@bjfu.edu.cn

**Specialty:** Straw/wood fiber chemistry.

**Will Discuss Formally and Informally:** Utilization of straw fiber as novel materials for industries.



**TANG, R. C.**, Professor, School of Forestry, Auburn University, Auburn, AL 36849-5418 (334-844-1088) (FAX 334-844-4221) email: tangrc@auburn.edu

**Specialty:** Mechanics and physics of wood and wood composites.

**Will Discuss Formally:** Long-term performance of wood composite structures; Creep models of wood composites under various environmental conditions; Elastic behavior of wood fibers; Dimensional stability and engineering reliability of wood composite structures; Duration of load behavior of lumber under changing environments; Effect of flake-cutting pattern and resin content on the mechanical and physical properties of flakeboard.

**Will Discuss Informally:** Undergraduate and graduate programs in forest products and wood science at Auburn; Mathematical models and simulation in forest and wood science.

**TEKLEYOHANNES, Anteneh Tesfaye**, University of British Columbia, Dept. of Wood Science, 2424 Main Mall, Vancouver, BC, CANADA V6T 1Z4 (604-822-8203) (FAX 604-822-9195) email: anteneht@interchange.ubc.ca

**Specialty:** Wood products engineering--basic wood processing, Sawmilling; Drying and preservation; Composite materials and furniture.

**Will Discuss Formally:** Environmental aspects of wood products.

**TICHY, ROBERT J.**, President, TM & I, 27013 Pacific Highway S, #179, Des Moines, WA 98198 (253-529-0900) (FAX 253-529-1326) email: bobbichy@msn.com

**Will Discuss Formally:** Nonresidential construction; Load and resistance factor design; Structural composites.

**Will Discuss Informally:** Above topics. Total quality concepts in R&D; Product and market development.

**VLOSKY, RICHARD P.**, Director & Professor of Forest Products Marketing, Louisiana State University, LA Forest Products Development Center, School of Renewable Nat. Res., Baton Rouge, LA 70803-6202 (225-578-4527) (FAX 225-578-4251) email: [vlosky@lsu.edu](mailto:vlosky@lsu.edu); website: [www.rnr.lsu.edu/lfpdc](http://www.rnr.lsu.edu/lfpdc)

Specialties: Forest Products Marketing; Forest-sector Business and Economic development; eBusiness; Certification; International Marketing Development. Will Discuss all specialties formally or informally

**WANG, XIPING**, USDA Forest Service, Forest Products Laboratory, 1 Gifford Pinchot Drive, Madison, WI 53726-2398 (608-231-9461) (FAX 608-231-9508) email: xwang@fs.fed.us

**Specialty:** Nondestructive evaluation (NDE) of wood; NDE of wood structural members/systems; Wood drying.

**Will Discuss Formally:** NDE of trees, logs, lumber; NDE of structural members/systems.

**Will Discuss Informally:** Dry kiln control.

**WIEDENBECK, JANICE K.**, Project Leader, USDA Forest Service, Northeastern Forest Experiment Station, 241 Mercer Springs Road, Princeton, WV 24740 (304-431-2708)  
(FAX 304-431-2772) email: [jwiedenbeck@fs.fed.us](mailto:jwiedenbeck@fs.fed.us)

**Specialty:** Secondary wood products processing; Manufacturing system simulation modeling; Production control.

**Will Discuss Formally:** Research pursuits and accomplishments of Princeton WV's work unit "Improved Processing Technology for Hardwoods" including gang-rip-first research and application programs; Rough mill simulation models; Yield improvement research; New hardwood lumber processing systems and technologies, etc.

**WINANDY, JERROLD**, 9227 Katzenbuechel Road, Mazomanie, WI 53560 (608-231-9316)  
(FAX 608-231-9582) email: [jwinandy@wisc.edu](mailto:jwinandy@wisc.edu)

**Specialty:** Engineered wood composites; Durability; Composites as tool for sustainable forestry.

**Will Discuss Formally:** Composites; Preservation; Property effects; Enhancing durability.

**Will Discuss Informally:** Standards; Codes; Physical/mechanical properties.

**WILCOX, W. WAYNE**, 4830 Faber Road, Shingle Springs, CA 95682 (530-677-2280)  
email: [wayne@wwwilcox.biz](mailto:wayne@wwwilcox.biz)

**Specialty:** Wood biodeterioration; Microscopical diagnosis of decay.

**Will Discuss Formally:** Nature and biology of wood decay; Wood-inhabiting fungi; Decay in wood structures due to design and construction deficiencies; Hawaii and pest control.

**Will Discuss Informally:** Teaching wood performance to architecture students.

**YAN, NING**, Assistant Professor, University of Toronto, Faculty of Forestry, 33 Wilcocks St., Toronto, Ontario CANADA M5S 3B3 (416-946-8070) (FAX 416-978-3834)  
email: [ning.yan@utoronto.ca](mailto:ning.yan@utoronto.ca)

**Specialty:** Material science.

**Will Discuss Formally:** Wood composites performance; Adhesive-wood interactions; Wood/natural fiber plastic composites; Pulp and paper.

**Will Discuss Informally:** Durability and weathering of forest products.

**YOUNGS, ROBERT L.**, Professor, Department of Wood Science and Forest Products, VPI & SU, Brooks Forest Products Center, Blacksburg, VA 24061-0503 (540-231-7673)  
(FAX 540-231-8868) email: [ryoungs@vt.edu](mailto:ryoungs@vt.edu)

**Specialty:** International forestry; Wood technology.

**Will Discuss Formally:** IUFRO and forest products research; Forest products and international development; Drying stresses in wood.

**Will Discuss Informally:** Any of the above; New developments in forest products; World forestry.

**ZERBE, JOHN I.**, 3310 Heatherdell Lane, Madison, WI 53713 (608-274-0714)  
email: [jzerbe@fs.fed.us](mailto:jzerbe@fs.fed.us)

**Specialty:** Wood as a source of energy and petrochemical substitutes; Use of wood to combat global climate change.

**Will Discuss Formally:** Conversion of wood to improved fuels; Wood as a raw material for alcohol production; Reduction of atmospheric carbon dioxide through wood utilization by conservation, sequestration and substitution.

**Will Discuss Informally:** History of the forest resource as a source of fuel; Current thinking on wood as a source of energy; Impact of energy usage on the future of our economy; Impacts of atmospheric carbon dioxide increase.